

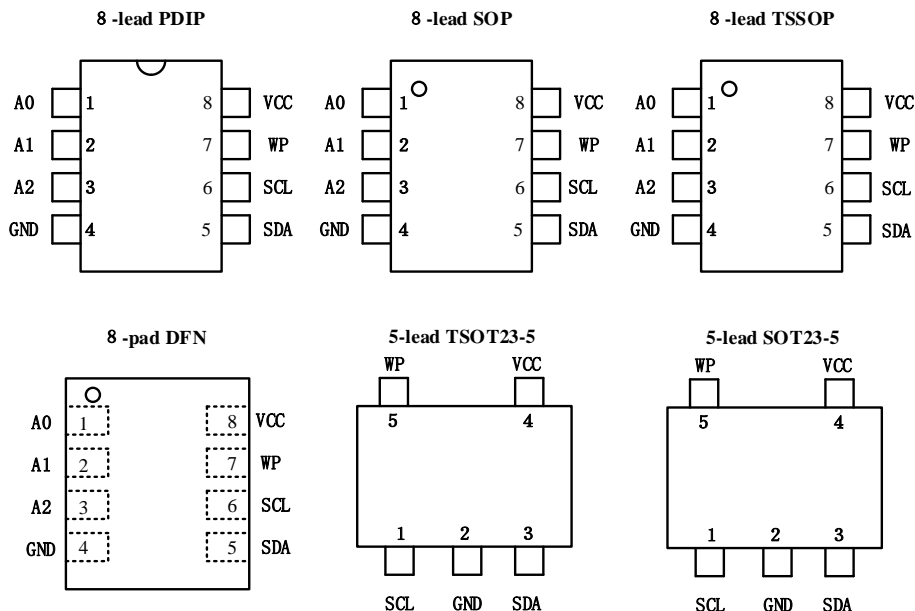
Features

- Compatible with all I²C bidirectional data transfer protocol
- Memory array:
 - 512 Kbits (64 Kbytes) of EEPROM
 - Page size: 128 bytes
 - Additional Write lockable page
- Single supply voltage and high speed:
 - 1 MHz
- Random and sequential Read modes
- Write:
 - Byte Write within 3 ms
 - Page Write within 3 ms
 - Partial Page Writes Allowed
- ECC (Error Correction Code)
- Write Protect Pin for Hardware Data Protection
- Schmitt Trigger, Filtered Inputs for Noise Suppression
- High-reliability
 - Endurance: 4 Million Write Cycles
 - Data Retention: 100 Years
- Enhanced ESD/Latch-up protection
 - HBM 8000V
- 8-lead PDIP/SOP/TSSOP/UDFN/TSOT23-5 and SOT23-5 packages

Description

- The BL24C512B provides 524288 bits of serial electrically erasable and programmable read-only memory (EEPROM), organized as 65536 words of 8 bits each.
- The device is optimized for use in many industrial and commercial applications where low-power and low-voltage operation are essential.
- The BL24C512B offers an additional page, named the Identification Page (128 bytes). The Identification Page can be used to store sensitive application parameters which can be (later) permanently locked in Read-only mode.

Pin Configuration



Pin Descriptions

Pin Name	Type	Functions
A0-A2	I	Address Inputs
SDA	I/O	Serial Data
SCL	I	Serial Clock Input
WP	I	Write Protect
GND	P	Ground
Vcc	P	Power Supply

Table 1

Block Diagram

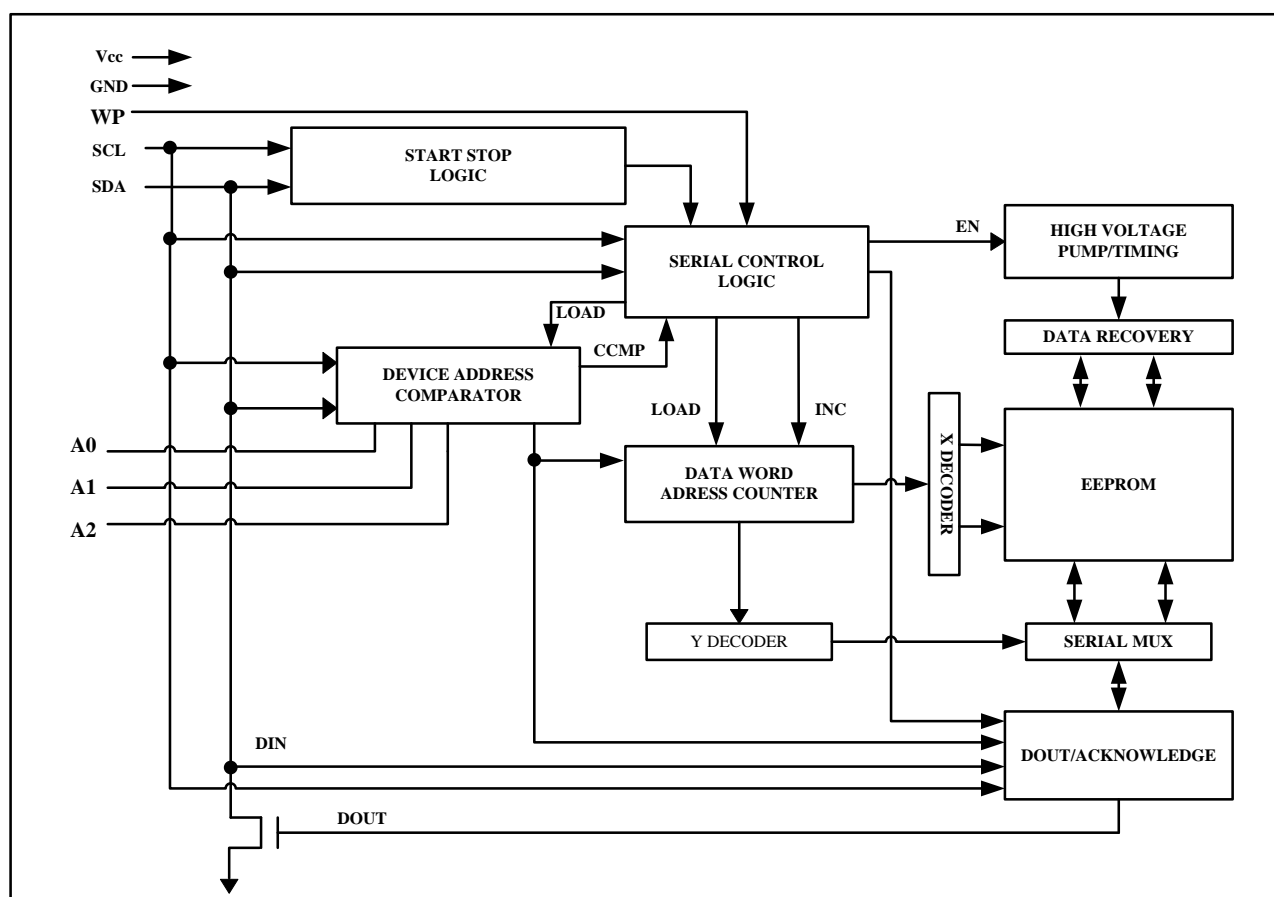


Figure 1

DEVICE/PAGE ADDRESSES (A2, A1 and A0): The A2, A1 and A0 pins are device address inputs that are hard wire for the BL24C512B. Eight 512K devices may be addressed on a single bus system (device addressing is discussed in detail under the Device Addressing section).

SERIAL DATA (SDA): The SDA pin is bi-directional for serial data transfer. This pin is open-drain driven and may be wire-ORed with any number of other open-drain or open-collector devices.

SERIAL CLOCK (SCL): The SCL input is used to positive edge clock data into each EEPROM device and negative edge clock data out of each device.

WRITE PROTECT (WP): The BL24C512B has a Write Protect pin that provides hardware data protection. The Write Protect pin allows normal read/write operations when connected to ground (GND). When the Write Protection pin is connected to Vcc, the write protection feature is enabled and operates as shown in the following **Table 2**.

WP Pin Status	BL24C512B
At VCC	Full(512K) Array
At GND	Normal Read/Write Operations

Table 2

Functional Description

1. Memory Organization

BL24C512B, 512K SERIAL EEPROM: Internally organized with 512 pages of 128 bytes each, the 512K requires a 16-bit data word address for random word addressing.

2. Device Operation

CLOCK and DATA TRANSITIONS: The SDA pin is normally pulled high with an external device. Data on the SDA pin may change only during SCL low time periods (see **Figure 2**). Data changes during SCL high periods will indicate a start or stop condition as defined below.

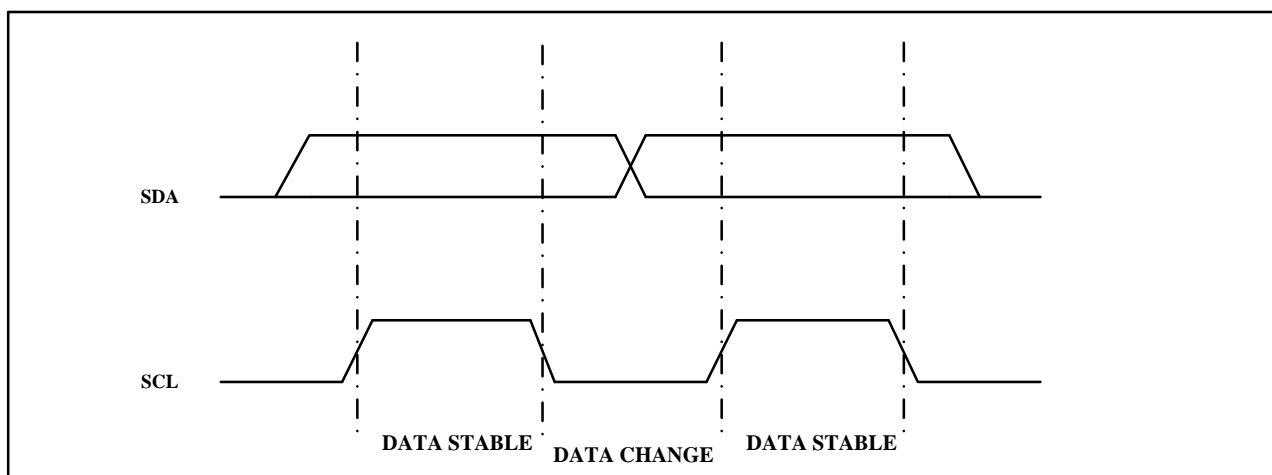


Figure 2. Data Validity

START CONDITION: A high-to-low transition of SDA with SCL high is a start condition which must precede any other command (see **Figure 3**).

STOP CONDITION: A low-to-high transition of SDA with SCL high is a stop condition. After a read sequence, the stop command will place the EEPROM in a standby power mode (see **Figure 3**).

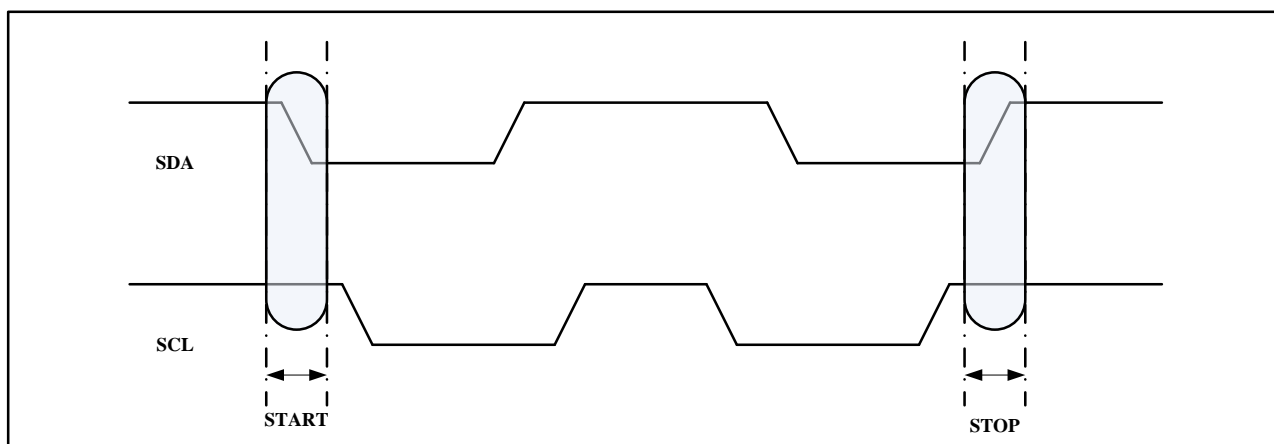


Figure 3. Start and Stop Definition

ACKNOWLEDGE: All addresses and data words are serially transmitted to and from the EEPROM in 8-bit words. The EEPROM sends a "0" to acknowledge that it has received each word. This happens during the ninth clock cycle.

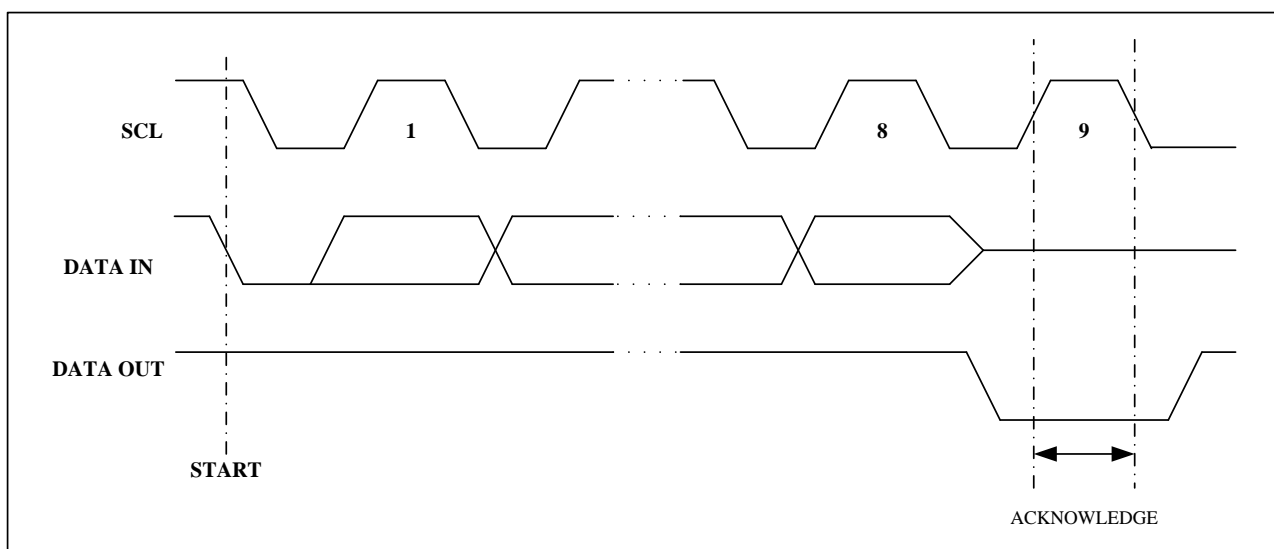


Figure 4. Output Acknowledge

STANDBY MODE: The BL24C512B features a low-power standby mode which is enabled: (a) upon power-up and (b) after the receipt of the STOP bit and the completion of any internal operations.

MEMORY RESET: After an interruption in protocol, power loss or system reset, any two-wire part can be reset by following these steps:

1. Clock up to 9 cycles.
2. Lock SDA high in each cycle while SCL is high.
3. Create a start condition.

3. Device Addressing

The 512K EEPROM devices all require an 8-bit device address word following a start condition to enable the chip for a read or write operation (see **Figure 5**)

MSB				LSB			
1	0	1	0	A2	A1	A0	R/W

Figure 5: Device Address

The device address word consists of a mandatory "1", "0" sequence for the first four most significant bits as shown. This is common to all the Serial EEPROM devices.

The 512K EEPROM uses A2, A1 and A0 device address bits to allow as much as eight devices on the same bus. These 3 bits must be compared to their corresponding hardwired input pins. The A2, A1 and A0 pins use an internal proprietary circuit that biases them to a logic low condition if the pins are allowed to float.

The eighth bit of the device address is the read/write operation select bit. A read operation is initiated if this bit is high and a write operation is initiated if this bit is low.

Upon a compare of the device address, the EEPROM will output a "0". If a compare is not made, the chip will return to a standby state.

DATA SECURITY: The BL24C512B has a hardware data protection scheme that allows the user to write protect the entire memory when the WP pin is at VCC.

4. Write Operations

BYTE WRITE: A write operation requires two 8-bit data words address following the device address word and acknowledgment. Upon receipt of this address, the EEPROM will again respond with a "0" and then clock in the first 8-bit data word. Following receipt of the 8-bit data word, the EEPROM will output a "0" and the addressing device, such as a microcontroller, must terminate the write sequence with a stop condition. At this time the EEPROM enters an internally timed write cycle, t_{WR} , to the nonvolatile memory. All inputs are disabled during this write cycle and the EEPROM will not respond until the write is complete (see **Figure 6**).

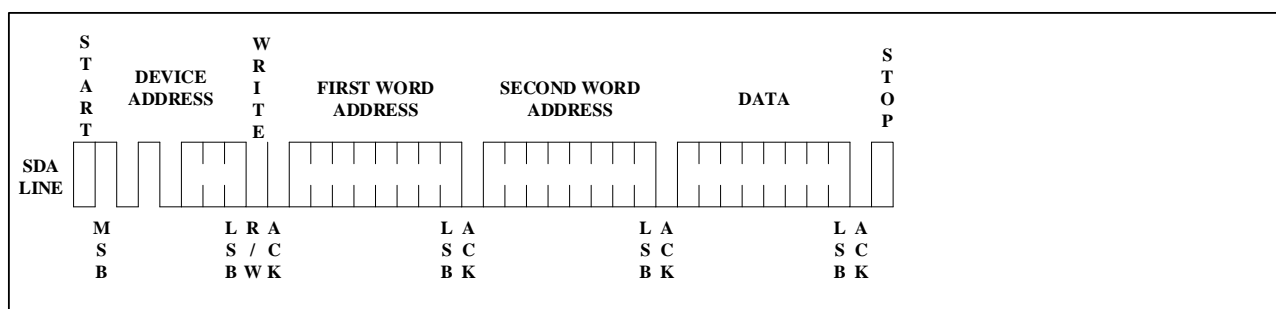


Figure 6. Byte Write

5. Read Operations

Read operations are initiated the same way as write operations with the exception that the read/write select bit in the device address word is set to "1". There are three read operations: current address read, random address read and sequential read.

CURRENT ADDRESS READ: The internal data word address counter maintains the last address accessed during the last read or write operation, incremented by one. This address stays valid between operations as long as the chip power is maintained. The address "roll over" during read is from the last byte of the last memory page to the first byte of the first page. The address "roll over" during write is from the last byte of the current page to the first byte of the same page. Once the device address with the read/write select bit set to "1" is clocked in and acknowledged by the EEPROM, the current address data word is serially clocked out. The microcontroller does not respond with an input "0" but does generate a following stop condition (see **Figure 8**).

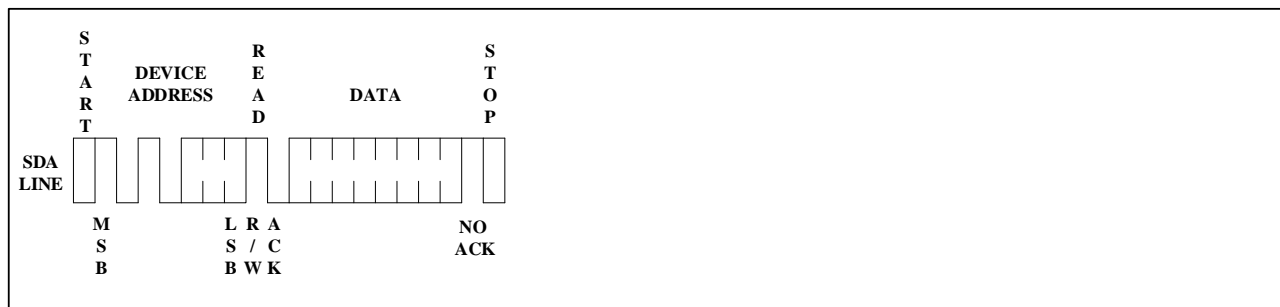


Figure 8: Current Address Read

RANDOM READ: A random read requires a "dummy" byte write sequence to load in the data word address. Once the device address word and data word address are clocked in and acknowledged by the EEPROM, the microcontroller must generate another start condition. The microcontroller now initiates a current address read by sending a device address with the read/write select bit high. The EEPROM acknowledges the device address and serially clocks out the data word. The microcontroller does not respond with a "0" but does generate a following stop condition (see **Figure 9**).

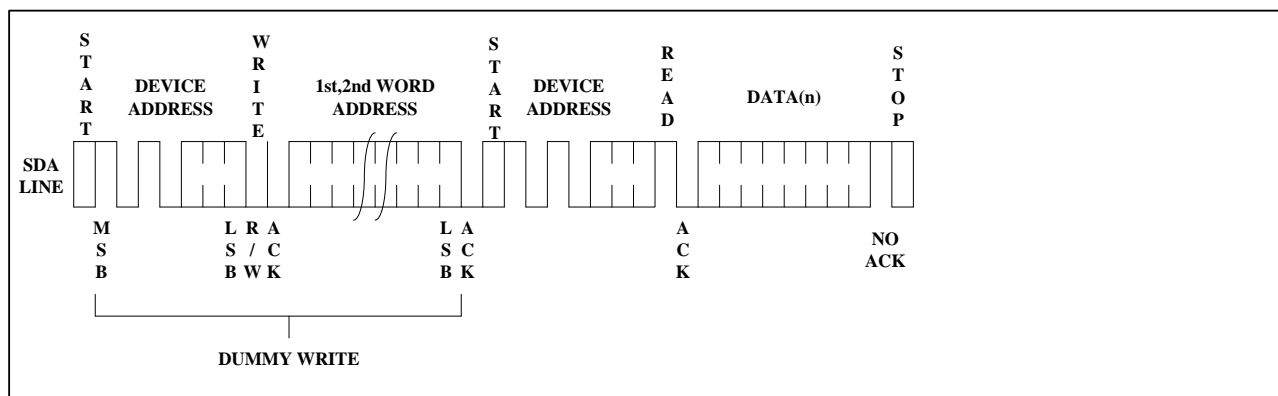


Figure 9. Random Read

SEQUENTIAL READ: Sequential reads are initiated by either a current address read or a random address read. After the microcontroller receives a data word, it responds with an acknowledge. As long as the EEPROM receives an acknowledge, it will continue to increment the data word address and serially clock out sequential data words. When the memory address limit is reached, the data word address will "roll over" and the sequential read will continue. The sequential read operation is terminated when the microcontroller does not respond with a "0" but does generate a following stop condition (see **Figure 10**).

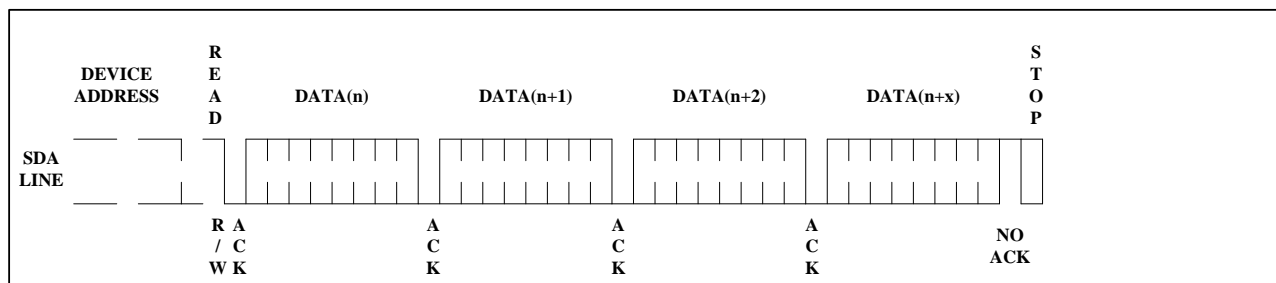


Figure 10. Sequential Read

READ IDENTIFICATION PAGE: The Identification Page (128 bytes) is an additional page which can be written and (later) permanently locked in Read-only mode.

The Identification Page can be read by issuing a Read Identification Page instruction. This instruction uses the same protocol and format as the Random Address Read (from memory array) with device type identifier defined as 1011b. The MSB address bits B15/B7 are don't care, the LSB address bits B6/B0 define the byte address inside the Identification Page. The number of bytes to read in the ID page must not exceed the page boundary (e.g.: when reading the Identification Page from location 10d, the number of bytes should be less than or equal to 118, as the ID page boundary is 128 bytes)

LOCK IDENTIFICATION PAGE: The Lock Identification Page instruction (Lock ID) permanently locks the Identification page in Read-only mode. The Lock ID instruction is similar to Byte Write (into memory array) with the following specific conditions:

Device type identifier = 1011b

Address bit B10 must be '1'; all other address bits are don't care

The data byte must be equal to the binary value xxxx xx1x, where x is don't care

Electrical Characteristics

Absolute Maximum Stress Ratings:

- DC Supply Voltage -0.3V to +6.5V
- Input / Output Voltage GND-0.3V to VCC+1.0V
- Storage Temperature -65°C to +150°C
- Ambient operating temperature. -55°C to +130°C

Comments:

Stresses above those listed under "Absolute Maximum Ratings" may cause permanent damage to this device. These are stress ratings only. Functional operation of this device at these or any other conditions above those indicated in the operational sections of this specification is not implied or intended. Exposure to the absolute maximum rating conditions for extended periods may affect device reliability.

DC Electrical Characteristics

Applicable over recommended operating range from (unless otherwise noted):

BL24C512B				T _A =-40°C to +85°C		V _{CC} = +1.7V to +5.5V C _L =100 pF
BL24C512BE1				T _A =-40°C to +105°C		
BL24C512BE0				T _A =-40°C to +125°C		
Parameter	Symbol	Min.	Max.	Unit	Condition	
Supply Voltage	V _{CC}	1.7	5.5	V		
Operating Clock Frequency	F _C		1.0	MHz		
Supply Current(Read)	I _{CCR}	-	0.3	mA	V _{CC} =5.0V	
Supply Current(Write)	I _{CCW}	-	0.3	mA	V _{CC} =5.0V	
Standby Current	I _{SB}	-	0.5	μA	V _{CC} =5.0V V _{IN} =V _{CC} or V _{SS} Standby Mode	
Input Leakage Current	I _{LI1}	-	1.0	μA	V _{IN} =V _{CC} or V _{SS}	
Output Leakage Current	I _{LO}	-	1.0	μA	SDA in Hi-Z, V _{OUT} =V _{CC} or V _{SS}	
Input Low Level	V _{IL1}	-0.3	V _{CC} ×0.3	V	V _{CC} =1.7V to 5.5V	
Input High Level	V _{IH1}	V _{CC} ×0.7	V _{CC} +1.0	V	V _{CC} =1.7V to 5.5V	
Output Low Level V _{CC} =1.7V	V _{OL1}	-	0.2	V	I _{OL} =0.15mA	
Output Low Level V _{CC} =5.0V	V _{OL2}	-	0.4	V	I _{OL} =3.0mA	

Table 3

Pin Capacitance

Applicable over recommended operating range from T_A = 25°C, f = 400kHz, V_{CC} = +1.7V

Parameter	Symbol	Min	Typ	Max	Unit	Condition
Input/Output Capacitance(SDA)	C _{I/O}	-	-	8	pF	V _{IO} =0V
Input Capacitance(A0,A1,A2,SCL)	C _{IN}	-	-	6	pF	V _{IN} =0V

Table 4

AC Electrical Characteristics

Applicable over recommended operating range from (unless otherwise noted):

BL24C512B	T _A = -40°C to +85°C	V _{CC} = +1.7V to +5.5V C _L = 100 pF		
BL24C512BE1	T _A = -40°C to +105°C			
BL24C512BE0	T _A = -40°C to +125°C			
Parameter	Symbol	Min.	Max.	Units
Clock Frequency, SCL	f _{SCL}	-	1000	kHz
Clock Pulse Width Low	t _{LOW}	0.5	-	μs
Clock Pulse Width High	t _{HIGH}	0.26	-	μs
Noise Suppression Time	t _I	-	50	ns
Clock Low to Data Out Valid	t _{AA}	-	0.45	μs
Time the bus must be free before a new transmission can start	t _{BUF}	0.5	-	μs
Start Hold Time	t _{HD:STA}	0.26	-	μs
Start Setup Time	t _{SU:STA}	0.26	-	μs
Data In Hold Time	t _{HD:DAT}	0	-	μs
Data In Setup Time	t _{SU:DAT}	50	-	ns
Input Rise Time ^{(1) (2)}	t _R	-	-	ns
Input Fall Time ^{(1) (2)}	t _F	-	-	ns
Stop Setup Time	t _{SU:STO}	0.26	-	μs
Data Out Hold Time	t _{DH}	50	-	ns
Write Cycle Time	t _{WR}	-	3	ms
5.0V, 25°C, Byte Mode(1)	Endurance	4M	-	Write Cycle

Table 5**Notes:**

1. This parameter is ensured by characterization only.
2. There is no min. or max. values for the input signal rise and fall times. It is however recommended by the I²C specification that the input signal rise and fall times be less than 120 ns when f_C < 1 MHz, more than 20 ns and less than 300 ns when f_C < 400 kHz.
3. AC measurement conditions:
R_L (connects to V_{CC}): 1.3 kΩ
Input pulse voltages: 0.3 V_{CC} to 0.7 V_{CC}
Input rise and fall time: 50 ns
Input and output timing reference voltages: 0.5 V_{CC}
The value of R_L should be concerned according to the actual loading on the user's system.
4. The device uses ECC (Error Correction Code) logic with 6 ECC bits to correct one bit error in 4 data bytes. Therefore, when a single byte has to be written, 4 bytes (including the ECC bits) are re-programmed. It is recommended to write by multiple of 4 bytes located at addresses 4N, 4(N+1), 4(N+2), 4(N+3), in order to benefit from the maximum number of write cycles.

5. Bus Timing

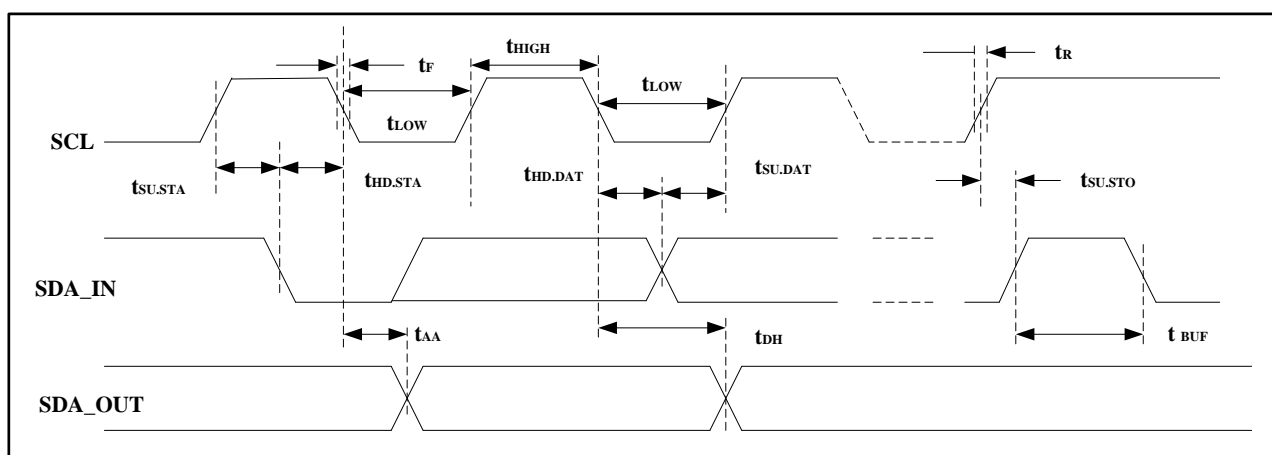


Figure 11. SCL: Serial Clock, SDA: Serial Data I/O

Write Cycle Timing

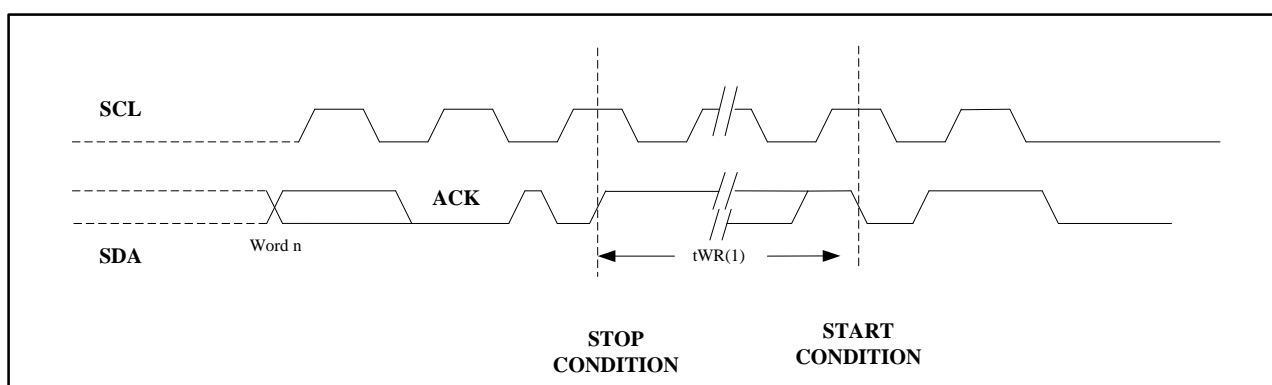


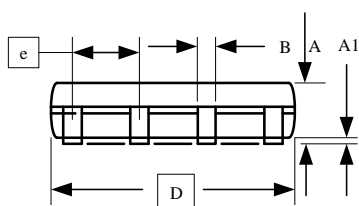
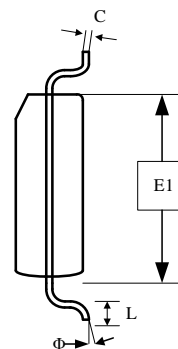
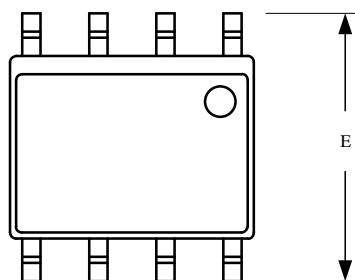
Figure 12. SCL: Serial Clock, SDA: Serial Data I/O

Notes:

The write cycle time t_{WR} is the time from a valid stop condition of a write sequence to the end of the internal clear/write cycle.

Package Information

SOP



COMMON DIMENSIONS
(Unit of Measure=mm)

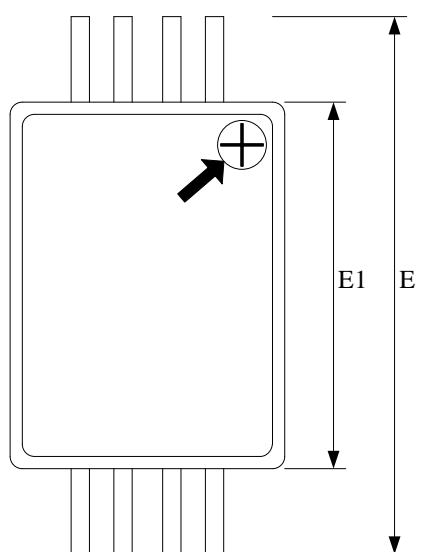
SYMBOL	MIN	NOM	MAX
A	1.35	—	1.75
A1	0.10	—	0.23
B	0.39	—	0.48
C	0.21	—	0.26
D	4.70	4.90	5.10
E1	3.70	3.90	4.10
E	5.80	6.00	6.20
e	1.27BSC		
L	0.50	—	0.80
Φ	0"	—	8"

BL24C512B
SSSSSPE0

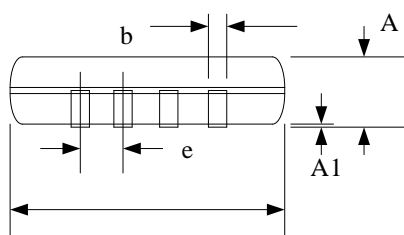
SSSSS	Lot ID
E0	Blank: -40°C to +85°C E1: -40°C to +105°C E0: -40°C to +125°C

Device	MSL	Package	Shipping (Qty/Packing)
BL24C512B	3	SOP8	2500/Tape & Reel

TSSOP

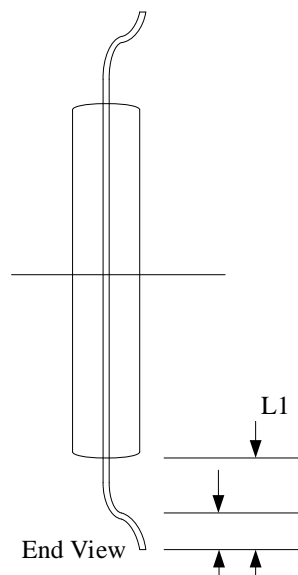


Top View



D

Side View



End View

COMMON DIMENSIONS
Unit of Measure=mm

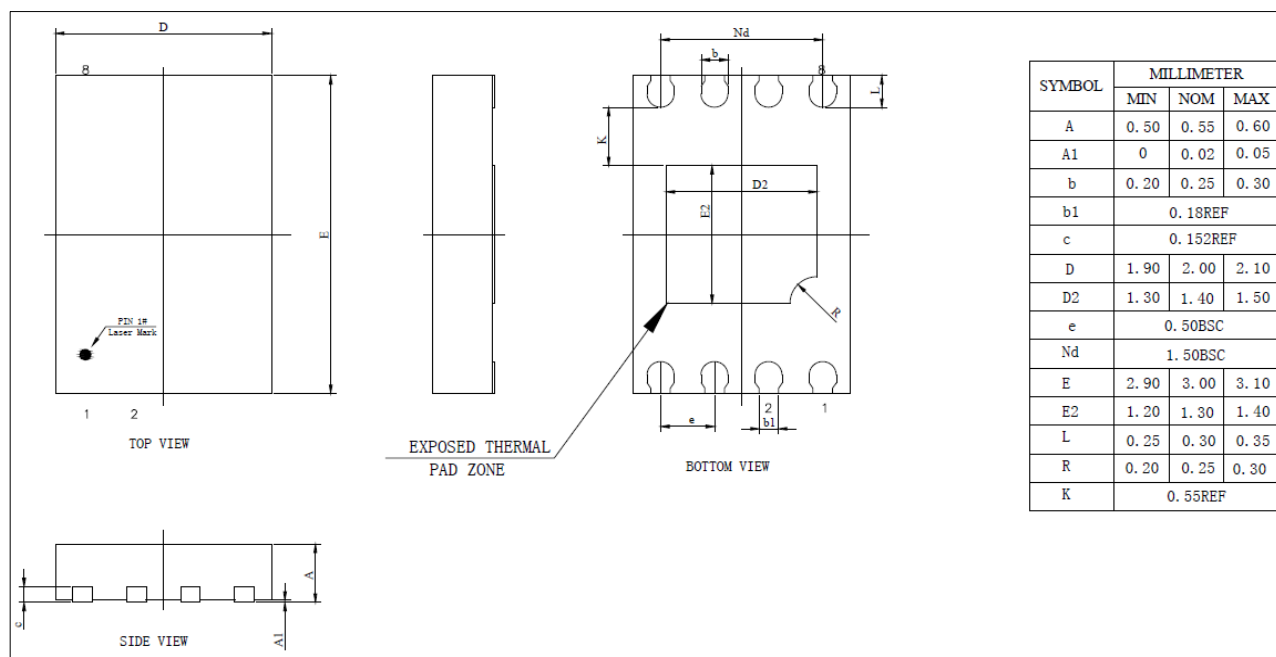
SYMBOL	MIN	NOM	MAX
D	2.90	3.00	3.10
E	6.20	6.40	6.60
E1	4.30	4.40	4.50
A	—	—	1.20
A1	0.05	—	0.15
b	0.21	—	0.30
e	0.65BSC		
L	0.45	0.60	0.75
L1	1.00REF		

○BL24C512B
SSSSSE0

SSSSS	Lot ID
E0	Blank: -40°C to +85°C E1: -40°C to +105°C E0: -40°C to +125°C

Device	MSL	Package	Shipping (Qty/Packing)
BL24C512B	3	TSSOP8	3000/Tape & Reel

UDFN



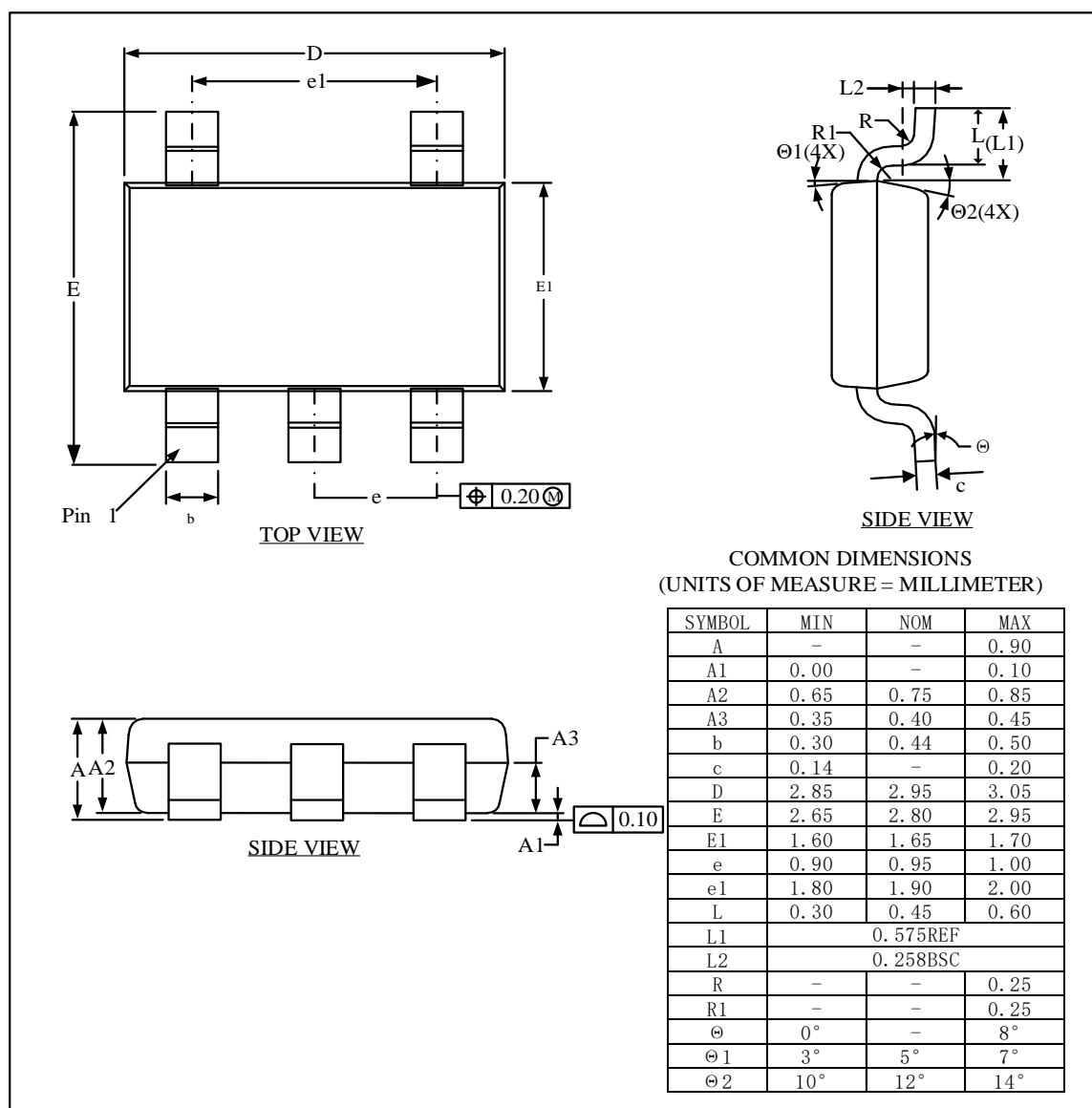
BL12B
E0
YYWW



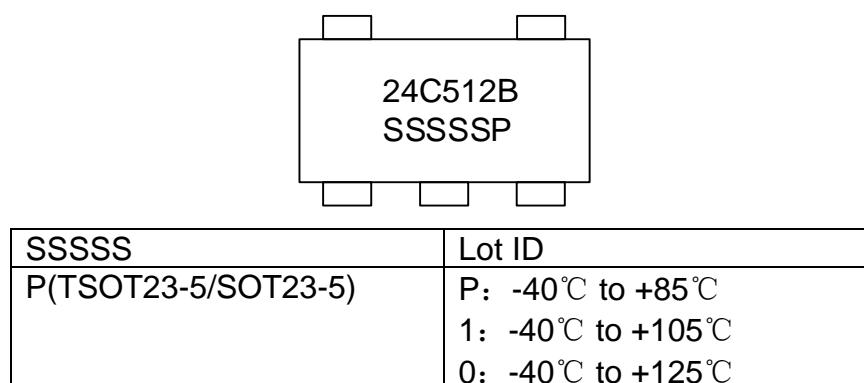
YY	Year
WW	Week
E0	Blank: -40°C to +85°C E1: -40°C to +105°C E0: -40°C to +125°C

Device	MSL	Package	Shipping (Qty/Packing)
BL24C512B	3	UDFN	3000/Tape & Reel

TSOT23-5

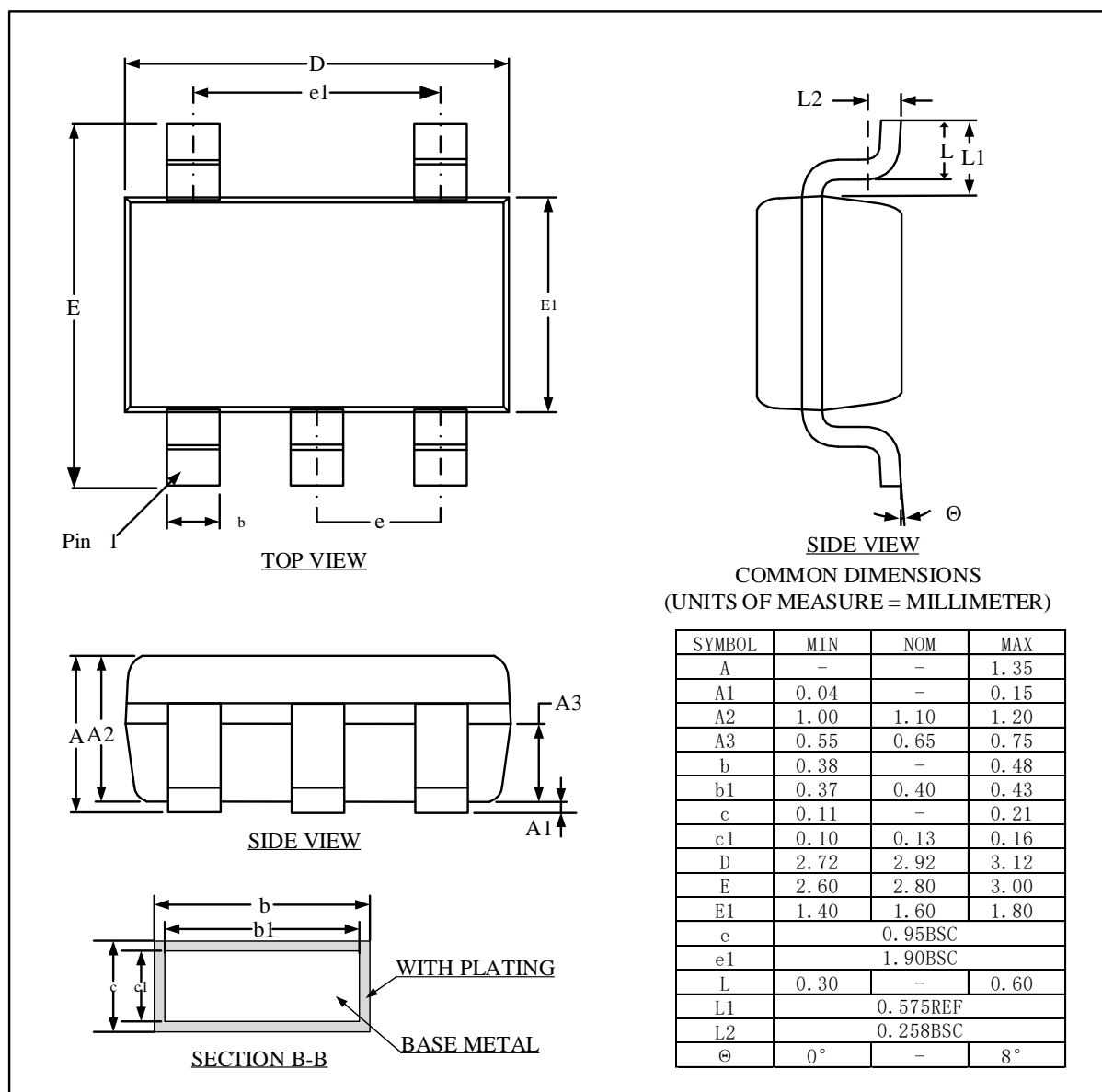


TSOT23-5

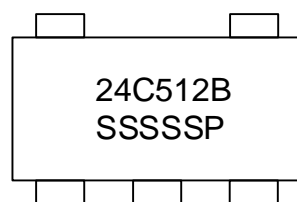


Device	MSL	Package	Shipping (Qty/Packing)
BL24C512B	3	TSOT23-5	3000/Tape & Reel

SOT23-5



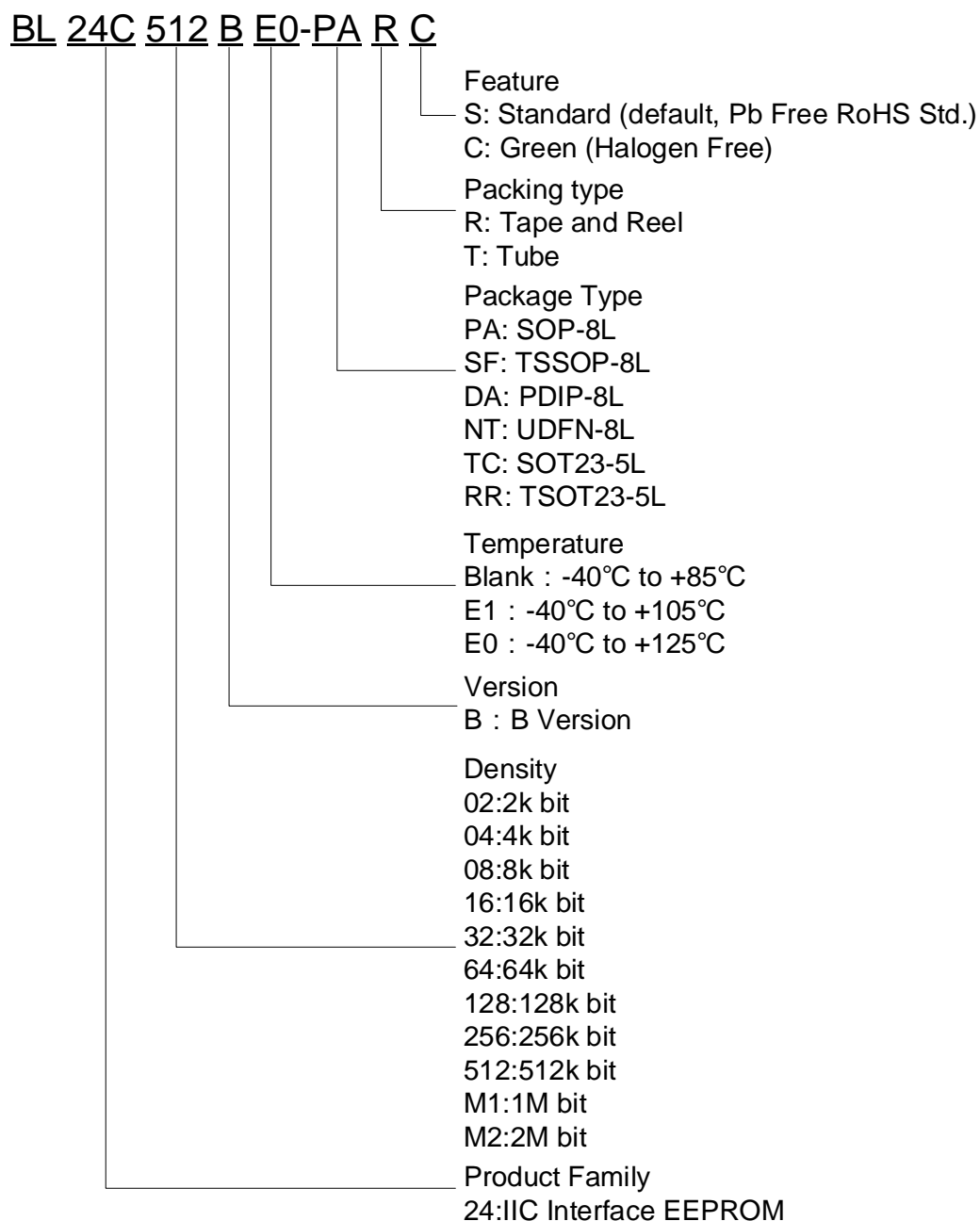
SOT23-5



SSSSS	Lot ID
P(TSOT23-5/SOT23-5)	P: -40℃ to +85℃
	1: -40℃ to +105℃
	0: -40℃ to +125℃

Device	MSL	Package	Shipping (Qty/Packing)
BL24C512B	3	SOT23-5	3000/Tape & Reel

Ordering Information



Revision history

Version 1.00 BL24C512B	10/28/2020
Initial Version	
Version 1.01 BL24C512B	03/24/2021
Update AC/DC Characteristics	
Version 1.02 BL24C512B	12/06/2021
Update Ambient operating temperature	